

## AMBASSADOR THERMAL MOTEL

*Cnr Whakaue & Hinemaru Streets*

The Ambassador Thermal Motel is just a 2 minute walk to the Energy Events Centre and the CBD. Units are spacious and complete with fully equipped kitchens, microwave, thermal heating, Sky TV and a hair dryer.

On site there is an outdoor heated swimming pool, two genuine mineral pools, an outdoor spa, guest laundry and drying room as well as BBQ facilities. Also available by request are breakfasts.

Room	Configuration	Sleeps	Price (per night)
Studio Unit (Twin)	Queen and Single Bed	1 - 3	\$110.00 (2 people)
One Bedroom Unit	Bedroom: Queen and Single Bed Lounge: Two Single Beds *	1 - 5	\$130.00 (2 people)
Two Bedroom Unit	Bedroom 1: Queen Bed Bedroom 2: Queen and Single Lounge: 2 singles *	1 - 6	\$185.00 (4 people)

\* Additional guests \$15.00 per person, per night

\*Room configurations in the larger units may vary



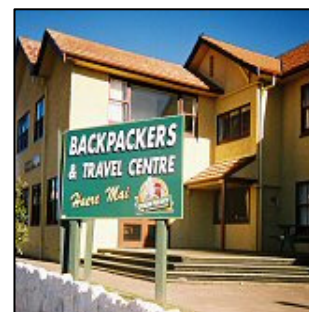
## CRASH PALACE BACKPACKERS

*Hinemaru Street*

Crash Palace offers budget accommodation in Rotorua. Located in the central city, the cosy backpackers is within walking distance of the famous Tamaki Tours, Government Gardens, Blue Baths, Museum, Polynesian Spa Pools, Kuirau Thermal Park. Crash Palace is just one block from a supermarket. Plus you are close to Rotorua's pubs and clubs.

### Facilities include:

- Rooms have Windows and Heaters
- Small Bar
- Thermally heated spa pool FREE to use
- Outdoor barbeque area
- Free off-street parking
- Washing and drying facilities
- Wireless Hotspot
- Two kitchens
- Free Storage room



Room	Configuration	Sleeps	Price (per night)
Double/Twin Unit	Double bed or twin singles (Shared bathroom)	1-2	\$58.00 per night
Double/Twin Unit	Double bed or twin singles (Ensuite bathroom)	1 - 2	\$68.00 per night
Dormitory beds	4, 6 or 9 bed dorms	1	\$24 - \$26 per night

## HAVANA MOTOR LODGE

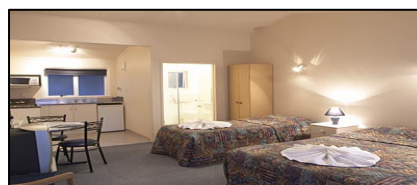
1078 Whakaue Street

The Havana Motor Lodge is located away from traffic noise and is just three minutes walk to shopping centre, Restaurants, Polynesian Pools, Lake front jetty, Government Gardens, Museum, Bowls and Golf Course.

The Havana Motor Lodge has 22 units which have ensuite, SKY TV, cooking facilities and central heating.

The Havana Motor Lodge on-site facilities include a wonderful heated outdoor swimming pool, two private mineral pools, laundry and drying room and ample parking for cars boats. They offer cooked or continental breakfast delivered to your room if required.

Room	Configuration	Sleeps	Price (per night)
Studio Unit (Twin)	Queen and Single Bed	1 - 3	\$120.00 (2 people)
One Bedroom Unit	Bedroom: Queen and Single Bed Lounge: One OR two single beds	1 - 5	\$140.00 (2 people)



## VENTURA INN AND SUITES

Corner Fenton and Victoria Streets

A warm welcome that's worth checking into! The 54-room Ventura Inn & Suites Rotorua hotel is one of the closest hotels to the CBD, with Rotorua's best restaurants, attractions and shopping within easy walking distance. The Energy Events Centre is approximately 5 minutes walk from the hotel.

### Facilities:

Heated outdoor swimming pool , Spa pool, Fitness room, Guest laundry, Business services, Internet kiosk, WiFi internet hotspot, Free parking

Room	Configuration	Sleeps	Price (per night)
Standard Studio	Queen and single bed	1 - 3	\$99.00 (2 people)
Deluxe Studio	King bed	1 - 2	\$110.00 (2 people)

\* Price includes breakfast

\* Additional guests \$15.00 per person, per night

\* Studios have tea / coffee making facilities

\* Suites have a kitchenette and microwave



## QUEST SERVICED APARTMENTS

7 Tryon Street

Located just a 3 minute drive away from the Rotorua town centre, Quest Rotorua is convenient for both the business and leisure traveller. Part of the international chain of Quest serviced apartments it offers a combination of hotel quality service with convenience of space and kitchen facilities in every room.

Situated only a short stroll from Whakarewarewa Thermal Hot Pools and Rotorua International Golf Course, Quest Rotorua is located close to the famous Polynesian Spa, Blue Baths, Rotorua International Stadium, Rotorua Convention Centre and Te Puia Museum. It takes less than 15 minutes drive to enjoy Rotorua's key attractions like the popular Skyline Gondola and Luge, Agrodome, Zorb Ball and Swoop Ride, the Tamaki Maori Village and Rotorua Airport.

### Room Amenities

Alarm Clock

Balcony

Bathroom Amenities Provided

Bathroom

Clock Radio

CNN or other News in room

Coffee maker/tea

Color TV in room

Desk

Iron/Ironing Board in room

Internet Access

Microwave

Radio in room

Refrigerator in room

Tables/Chairs

DVD Player

Work desk with lamp in room

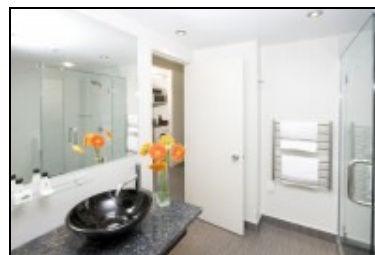
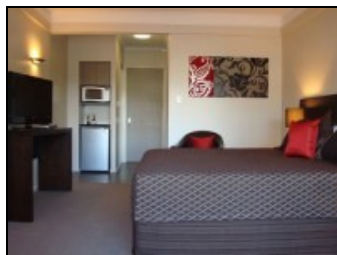
### Leisure Facilities

The apartments at Quest Rotorua maintain a strong appeal with families, as they provide the convenience of facilities such as a fully equipped kitchen, guest laundry and spacious lounge/dining area, offering families a 'home away from home.'

The large pool, spa pools, provide hours of entertainment for families with children of all ages. The pool area is nicely appointed with sun loungers, chairs, tables, sun umbrellas and a barbecue area for you to use.

For the adventure and sporting travellers, a secure sport equipment lock up area is provided.

Room	Configuration	Sleeps	Price (per night)
Studio Twin or Double	Queen bed or twin beds	1 - 2	\$135.00 (2 people)
Triple Studio	Queen & Single Bed	1 - 3	\$149.00 (3 people)
One Bedroom Unit	Queen in the bedroom, Single in the lounge	1 - 3	\$145.00 (2 people) \$169.00 (3 people)



## SING AOTEAROA - Accommodation options

### VICTORIA LODGE.

10 Victoria Street

Victoria Lodge is a stylish boutique motor lodge situated in a quiet location and an easy stroll to cafes, restaurants, bars, supermarkets, racecourse, Energy Events Centre and convention centre. It is the perfect base for your conference, weekend, holiday or business stay.

Stylish, quiet, comfortable studios with private, thermally heated hot pool. Queen or queen and single beds. SKY TV, microwave, toaster, fridge, table and chairs, easy chair, iron and ironing board.

Executive, two-bedroom self-contained townhouse apartments. SKY TV in both bedrooms and lounge. Comfortable settees, stereo. Dining area seats six. Modern, fully equipped kitchen with cooktop, oven, microwave, fridge, pantry, crockery, cutlery and utensils. Spa bath, thermal heating, iron and ironing board.

Apartments ideal for small meetings or interviews. Day rates available with catering provided.

Complimentary tea, plunger coffee, hot chocolate, cookies. All rooms non-smoking. Continental or home-cooked breakfast delivered to rooms. Free off-street parking. Wireless Internet, fax, guest laundry. Restaurant delivery and chargeback arranged.

Room	Configuration	Sleeps	Price (per night)
Single/Double Studio	Queen bed	1 - 2	\$140.00 (1-2 people)
Twin Studio	Queen & Single Bed	1 - 2	\$150.00 (2 people)
Two Bedroom Unit	Queen in the bedroom, Queen & Single in the 2 <sup>nd</sup> bdrm Fold Out Settee in the Lounge	1 - 6	\$220.00 (4 people)

\*Additional Guests per room are \$40.00 per night.



*To confirm a reservation at one of the above properties fill in the online registration form OR send an email with your requirements to [TheOrganiser@RotoruaNZ.com](mailto:TheOrganiser@RotoruaNZ.com)*

*There are many accommodation providers in Rotorua and these are just a selection, please contact The Organiser if you require further information or would like further quotes: [TheOrganiser@RotoruaNZ.com](mailto:TheOrganiser@RotoruaNZ.com)*